

921

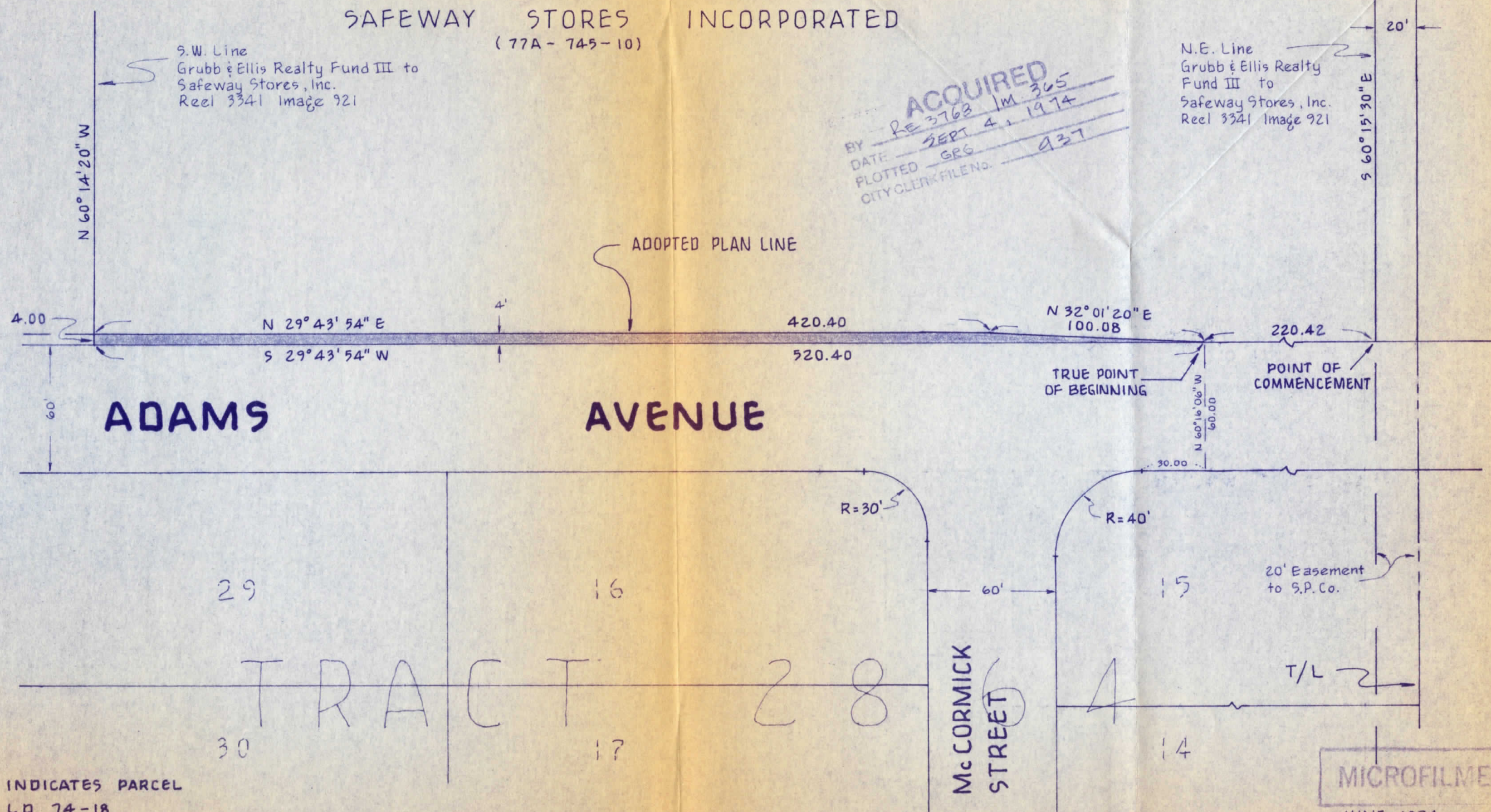
SAFEWAY STORES INCORPORATED

(77A - 745 - 10)

S.W. Line
Grubb & Ellis Realty Fund III to
Safeway Stores, Inc.
Reel 3341 Image 921

N.E. Line
Grubb & Ellis Realty
Fund III to
Safeway Stores, Inc.
Reel 3341 Image 921

ACQUIRED
BY RE 3768 IM 365
DATE SEPT 4, 1974
PLOTTED GRG
CITY CLERK FILE NO. 437



MICROFILMED
JUNE, 1974

INDICATES PARCEL
LD 74-18
AREA = 1882 ± Sq. Ft.

PLOTTED GRG,

PUBLIC WORKS DEPARTMENT - CITY OF SAN LEANDRO

NO.	DATE	REVISION	DESIGNER	APPROVAL DATE	ADAMS AVENUE WIDENING (PLAN LINE) SAFEWAY STORES INC.	SHEET	OF
			<i>mzm</i>			1	1
			DRAFTSMAN <i>mzm</i>			JOB NO.	
			SR. ENG'R.	RICHARD H. WARD Public Works Director R.C.E. No. 8375		SCALE	1" = 50'
			ASST. P.W. DIR.			DWG.	557 CASE 1603

IT SHALL BE THE CONTRACTOR'S RESPONSIBILITY TO DETERMINE THE EXISTENCE AND LOCATION OF ALL UNDERGROUND UTILITIES. THOSE SHOWN REPRESENT THE BEST INFORMATION AVAILABLE TO THE CITY OF SAN LEANDRO AT THE TIME OF PREPARATION OF THESE PLANS. NO GUARANTEE IS MADE AS TO THE ACCURACY OF THIS INFORMATION.